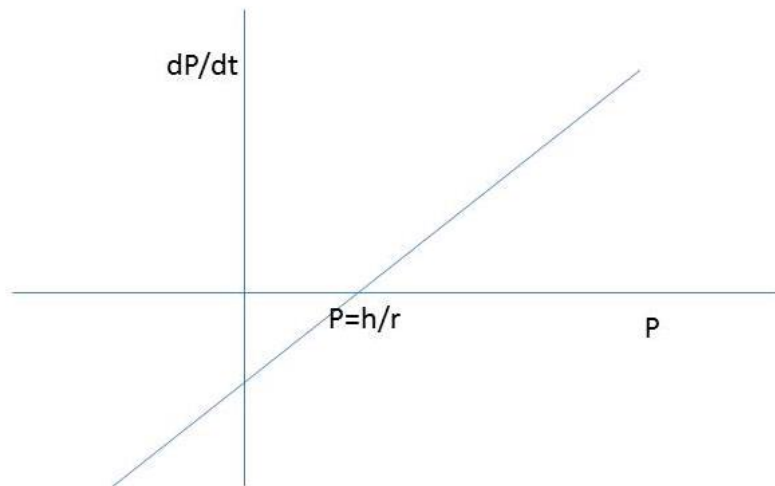


Solutions to Exercise 7

$$\text{Q1 } P(t) = \frac{150}{1 - \frac{1}{4e^{0.06t}}}$$

Q2

$$\frac{dP}{dt} = rP - h$$



Population will go to zero when: $t = \frac{1}{r} \log_e \left[\frac{h}{h-rP_0} \right]$